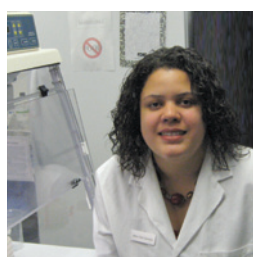


# Research Fellowship Opportunities

## Science To Achieve Results



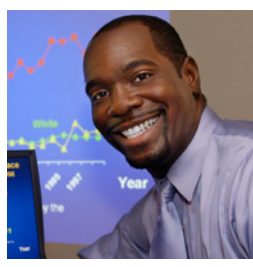
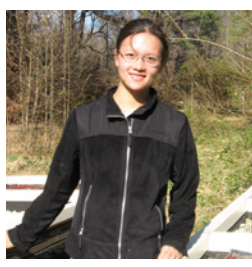
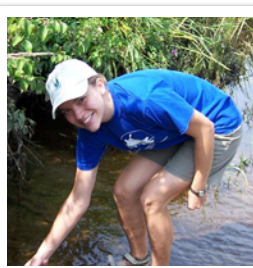
### Science To Achieve Results (STAR) Graduate Fellowships

- Funds up to \$42,000 per year for advanced degrees and careers in environmental science and engineering
- Support for full-time students in a 2-year masters program or 3-year doctoral program at any accredited U.S. college or university
- Annual \$25,000 stipend, \$5,000 for expenses, and up to \$12,000 tuition and fees
- U.S. citizens, permanent residents, and resident aliens with green cards may apply.

### Qualifying Areas of Research for STAR Fellowships

- **Emerging Environmental Approaches and Challenges**
  - Environmental Entrepreneurship
  - Information Science
  - Social Sciences
- **Air, Climate and Energy**
  - Clean Air
  - Global Change
  - Green Energy/Natural Resources Production and Use
- **Chemical Safety for Sustainability**
  - Green Engineering/Building/Chemical Products and Processes/Materials Development
  - Nanotechnology
  - Pesticides and Toxic Substances
- **Human Health Risk Assessment**
  - Public Health
  - Risk Assessment and Risk Management
- **Safe and Sustainable Water Resources**
  - Drinking Water
  - Coastal and Estuarine Processes
  - Hydrogeology and Surface Water
- **Safe and Healthy Communities**
  - Ecosystem Services—Aquatic Systems Ecology
  - Ecosystem Services—Terrestrial Systems Animal Ecology
  - Ecosystem Services—Terrestrial Systems Soil and Plant Ecology
  - Built Environment and Land Use/Protection
  - Tribes and American Indian/Alaska Native/Pacific Islander Communities

## Greater Research Opportunities



### Greater Research Opportunities (GRO) Undergraduate Fellowships

- Funds up to \$48,900 for the last 2 years of an undergraduate program in environmental studies
- Support for students at 4-year, fully accredited institutions of higher education with limited funding for research and development
- \$800 monthly stipend, \$2,500 expense allowance, and up to \$10,000 for tuition and fees
- Summer internship at EPA research laboratory or other facility with \$9,500 stipend including relocation allowance
- Applicants must have at least a “B” average.
- U.S. citizens, permanent residents, and resident aliens with green cards may apply.
- Students at schools with substantial minority enrollment are particularly encouraged to apply.

### Areas of Research Supported for GRO

- Natural and Life Sciences
- Environmental Sciences and Interdisciplinary Programs
- Social Sciences
- Physical Sciences
- Mathematics and Computer Sciences
- Engineering

